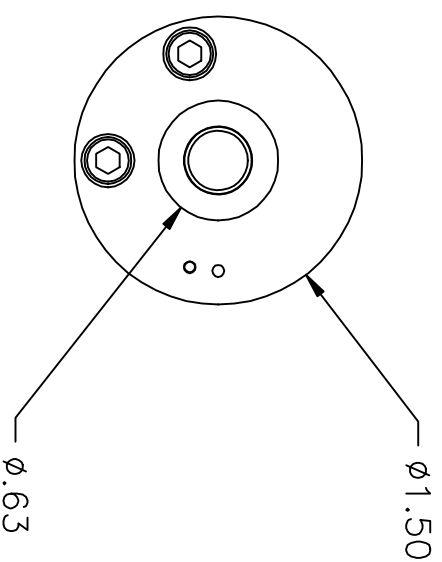
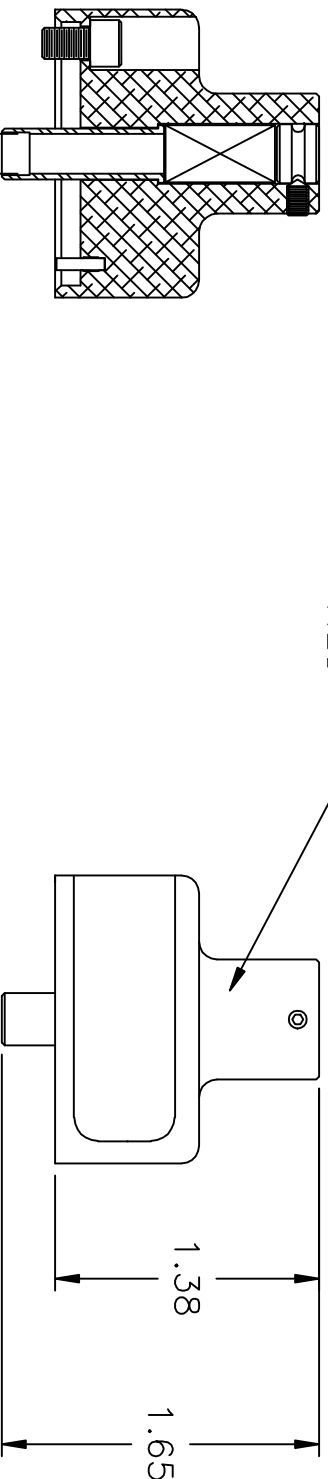
 <b>ASTRO TOOL CORP.</b> CAGE 58164 BEAVERTON, OREGON USA		FCT ELECTRONIC CONTACTS								AWG	
		20	18	16	14	12	10	8			
TGV402-1 USE WITH EUS309 CRIMP TOOL		FMP 002 P/S	1	2	3						SEL. NO.
		FMP 003 P/S				4	5				
		FMP 004 P/S						6	7		

NAME PLATE (REF.)  
(SCALE 2-1)




**UNCONTROLLED DOCUMENT  
WILL NOT BE UPDATED**

BODY COLOR:  
RED



$\phi$ .224 X .144 DEEP  
 $\phi$ .209 THRU

REV.	DESCRIPTION	BY	DATE	APR.	THESE DRAWINGS, SPECIFICATIONS OR OTHER DATA ARE AND REMAIN THE PROPERTY OF ASTRO TOOL CORP. AND MUST BE RETURNED UPON REQUEST. THEY CONTAIN INFORMATION OWNED AND/OR DEVELOPED BY ASTRO AT ITS OWN PRIVATE EXPENSE AND MAY NOT BE USED, DUPLICATED OR DISCLOSED TO OTHERS, IN WHOLE OR IN PART FOR DESIGN, MANUFACTURE OR PROCUREMENT WITHOUT THE WRITTEN PERMISSION OF ASTRO TOOL CORP. EACH AND EVERY TIME.	SCALE:	UNLESS OTHERWISE SPECIFIED: DECIMALS: .XXX ± .005 XX ± .010 X ± .030 ANGLES: ± 1°	 <b>ASTRO TOOL CORP.</b> 21615 S.W. TUALATIN VALLEY HWY., BEAVERTON OR 97006	CAGE 58164
A	NEW RELEASE	DY0	07-17-09	MMK		N.T.S. DWN BY: DY0 DATE: 07-17-09 APPROVED:			
PART NO.		B	TGV402-1-ENV		DESCRIPTION: ENVELOPE DRAWING: TGV402-1 POSITIONNER				

2. USE WITH EUS309 TOOL  
NOTES: 1. THIS IS AN AUTOCAD DRAWING DO NOT CHANGE MANUALLY.