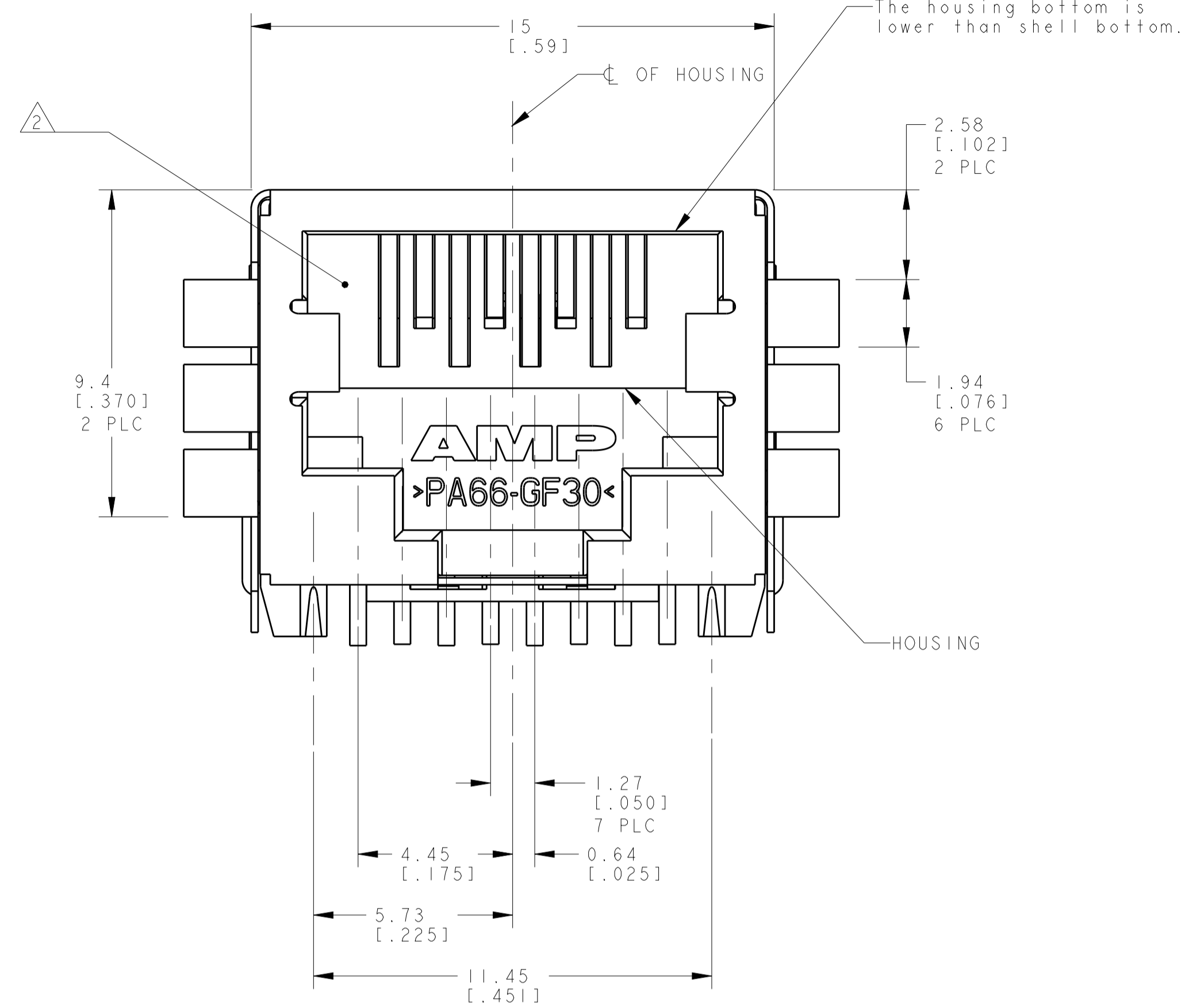
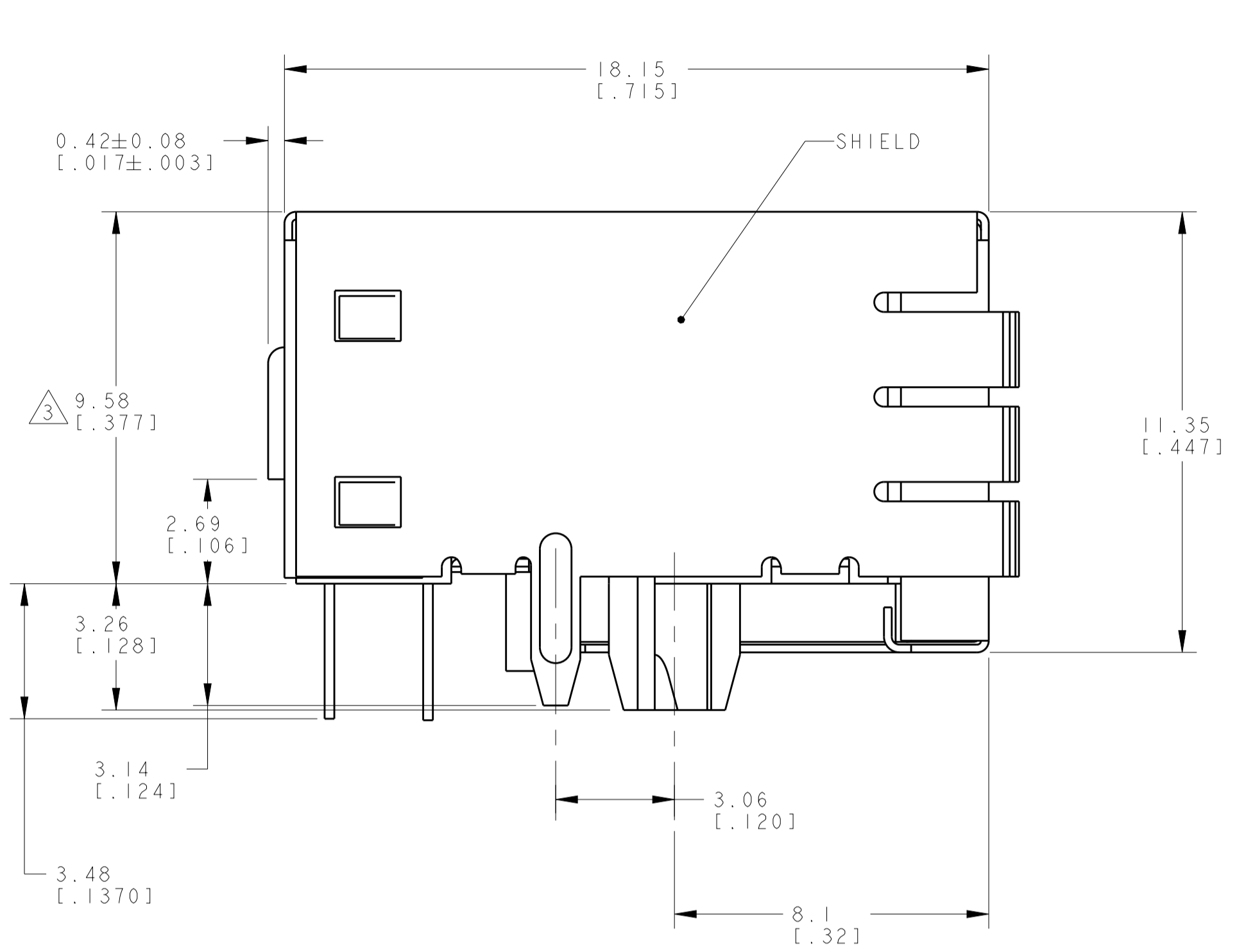
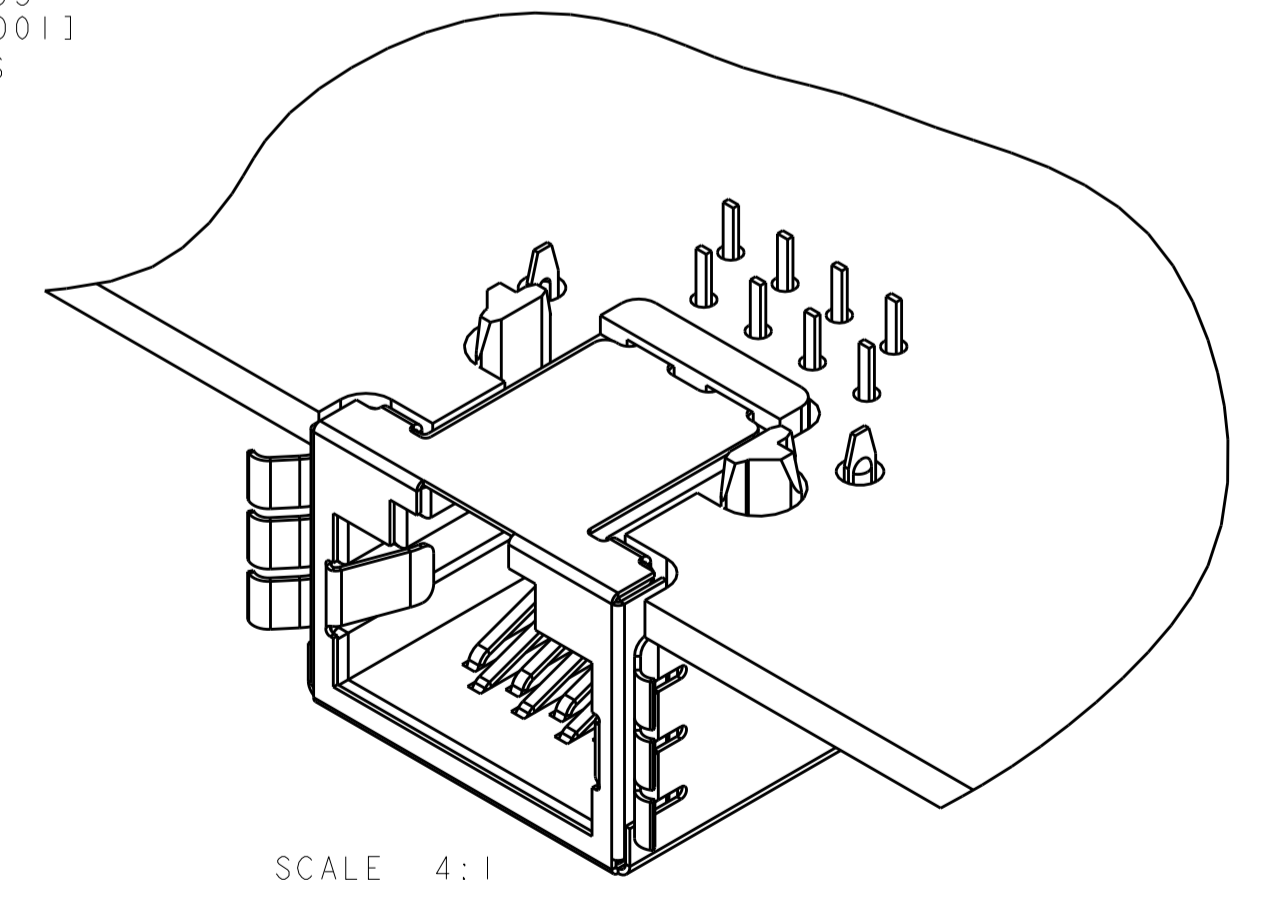
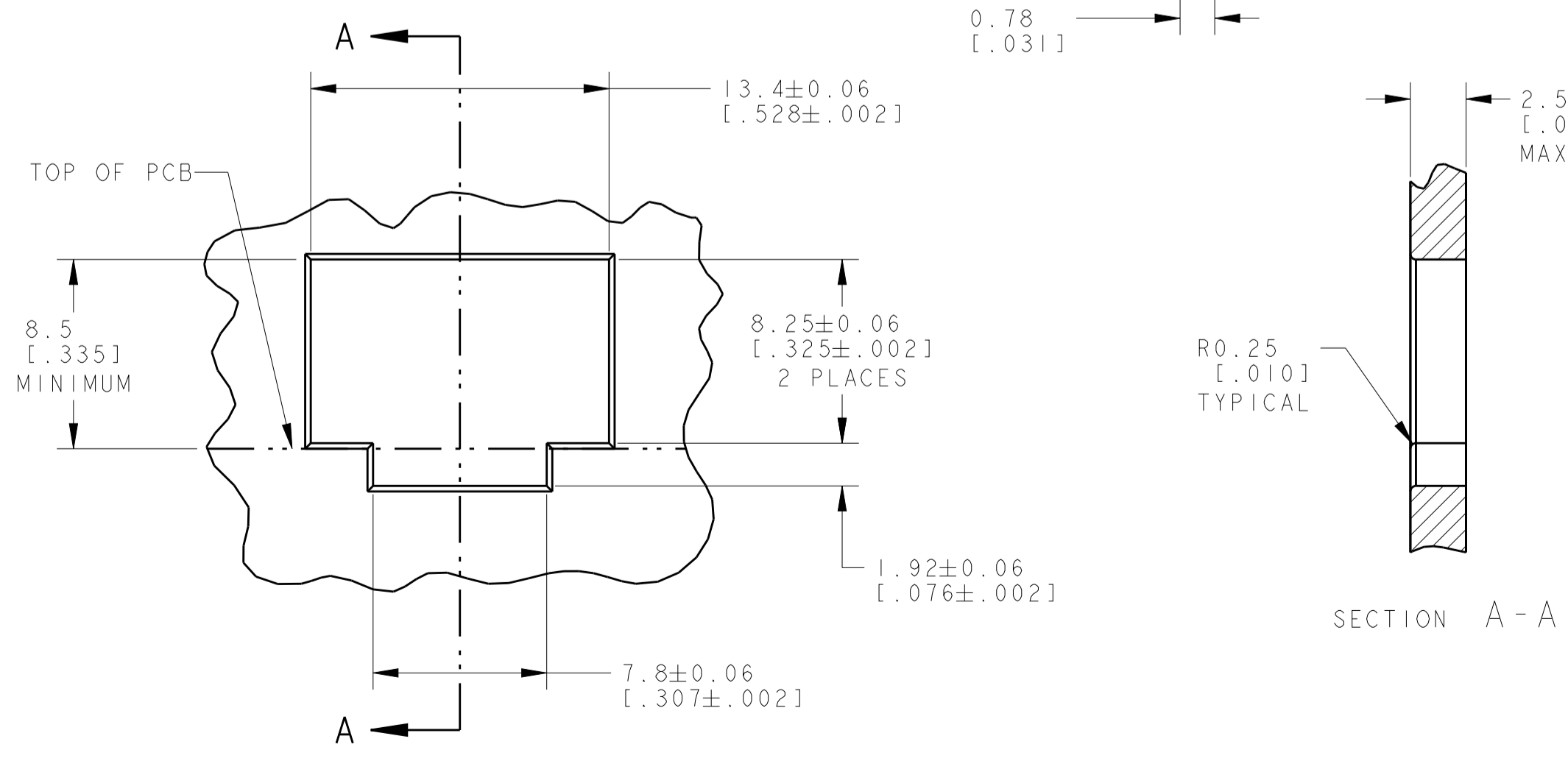
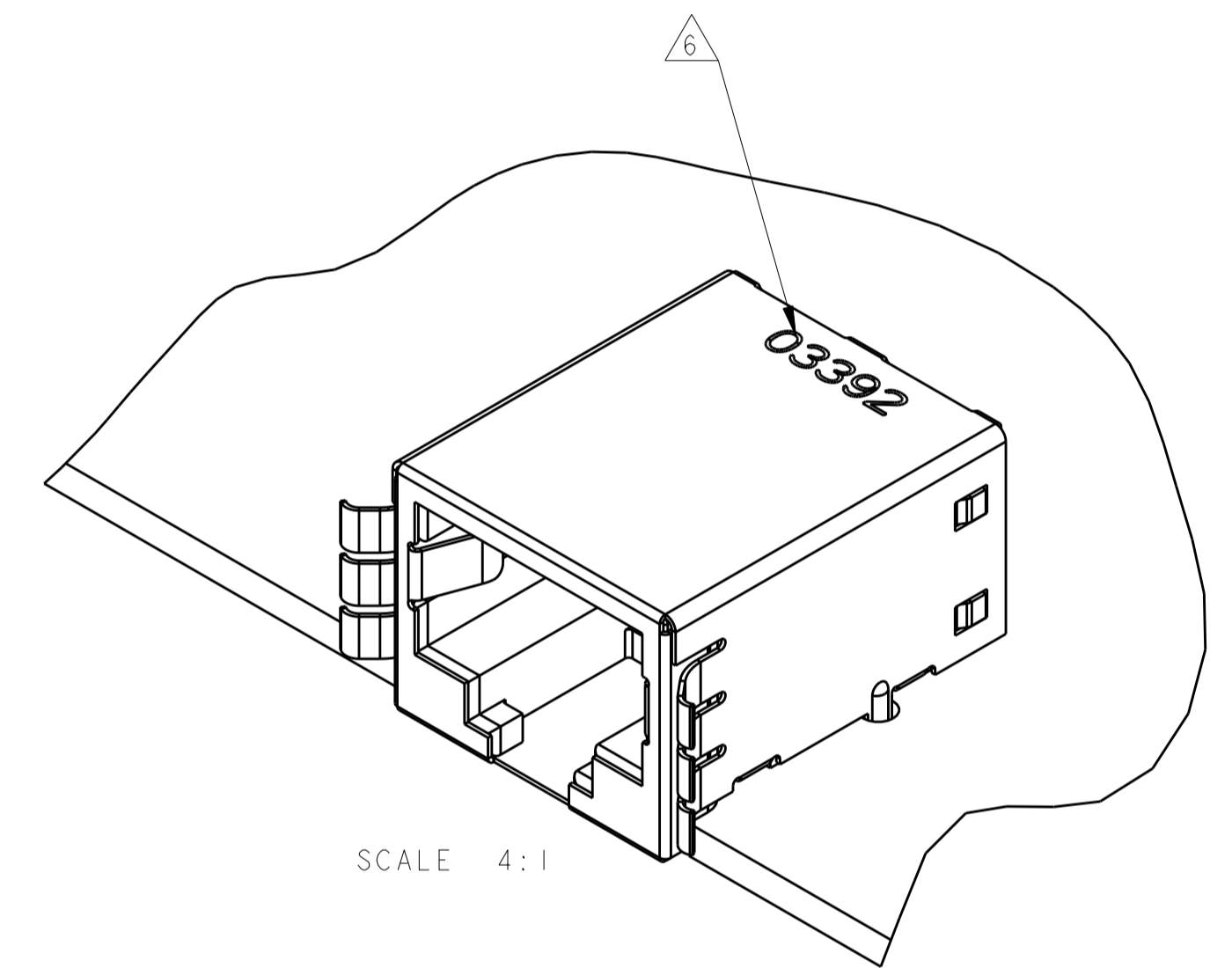
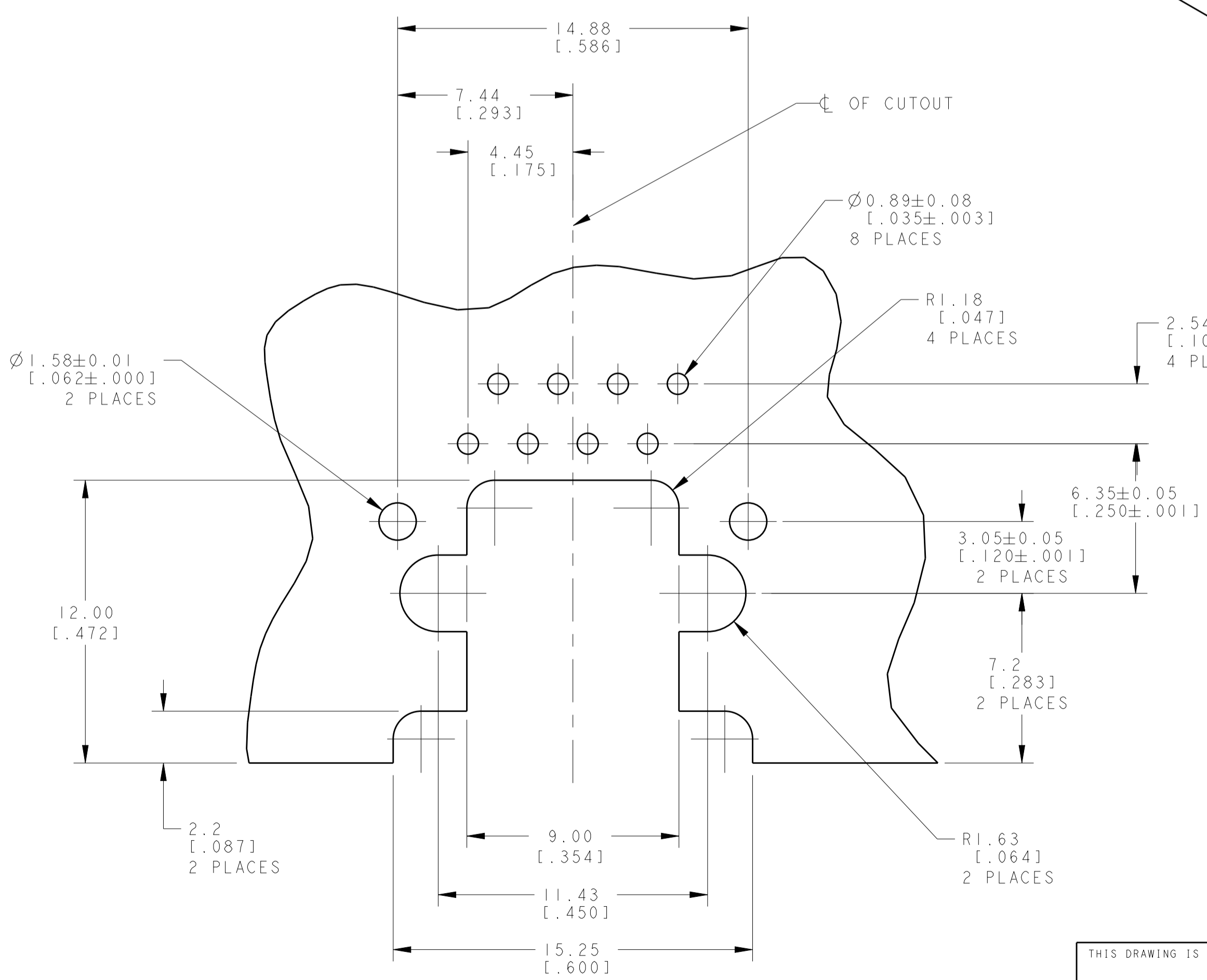
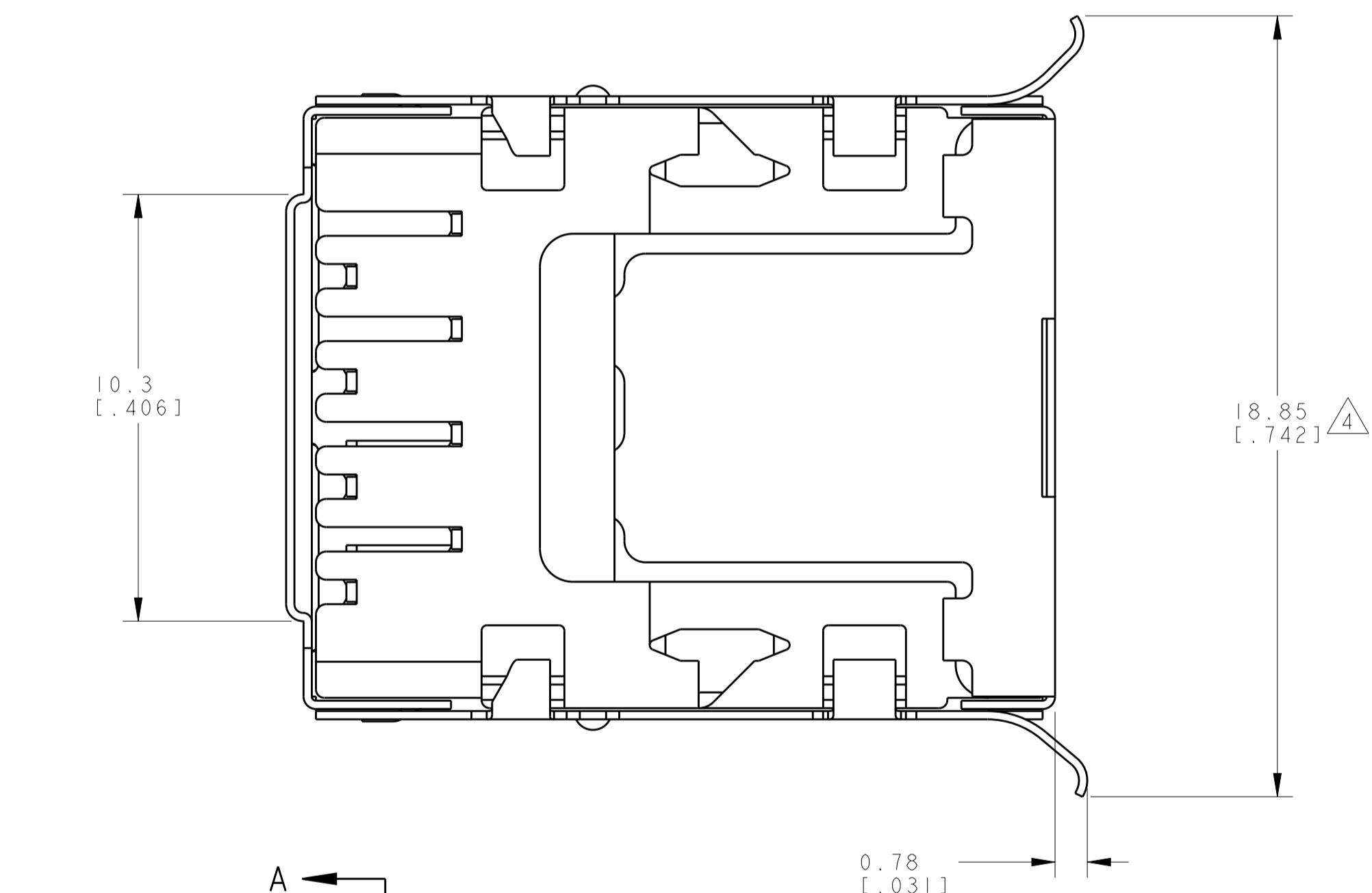


REVISIONS				
P.	LTN.	DESCRIPTION	DATE	APPROV.
B		REVISED PER ECO-14-015233	27APR2015	LL SH



- 1 MATERIAL: HOUSING - HIGH TEMPERATURE NYLON, BLACK, UL 94V-0, IR REFLOW SOLDERING PROCESS COMPATIBLE. TERMINALS - 0.25[.010] THICK PHOSPHOR BRONZE PLATED WITH 3.81µm[.000150] MINIMUM THICK MATTE TIN IN SOLDER AREA, 1.27µm[.000050] MINIMUM GOLD IN LOCALIZED PLATE AREA. ENTIRE TERMINAL PLATED WITH 1.27µm[.000050] MINIMUM THICK NICKEL. SHIELD - 0.1[.0039] MIN THICK COPPER ZINC ALLOY, PREPLATED WITH 2.0-4.0µm[.000079-.000157] THICK TIN OVER 1.27µm[.000050] MIN THICK NICKEL
- 2 JACK CAVITY CONFORMS TO FCC RULES AND REGULATIONS PART 68, SUBPART F.
- 3 THIS DIMENSION REPRESENTS THE TOTAL HEIGHT OF THE CONNECTOR FROM THE TOP OF THE PC BOARD.
- 4 THIS DIMENSION HAS A MAXIMUM VALUE OF 20.50[.807] WHEN JACK IS INSTALLED BEHIND PANEL.
- 5 PACKAGED 66 ASSEMBLIES PER PVC TRAY, 396 PER BOX.
- 6 MANUFACTURING DATE CODE: ORIENTED AND LOCATED APPROXIMATELY AS SHOWN. LASER PRINTING. TEXT HEIGHT APPROXIMATELY 2MM. FIRST 2 DIGITS = LAST 2 DIGITS OF YEAR. NEXT 2 DIGITS = MANUFACTURING WORK WEEK. LAST DIGIT = DAY OF WEEK WITH SUNDAY = 1



SUGGESTED PRINTED CIRCUIT BOARD LAYOUT COMPONENT SIDE SCALE 6:1

THIS DRAWING IS A CONTROLLED DOCUMENT.		DWN: RINSEN_SUN 28MAY2010		1932626-1	
DIMENSIONS: mm [INCHES]		CHK: SUNY_ZHAO 28MAY2010		MATERIAL / FINISH	
TOLERANCES UNLESS OTHERWISE SPECIFIED:		APVD: STEVEN_YAO 28MAY2010		PART NUMBER	
0 PLC ±		PRODUCT SPEC		1932626-1	
1 PLC ±0.131[.005]		APPLICATION SPEC		MODULAR JACK ASSEMBLY, 8 POSITION, SHIELDED, 10mm	
2 PLC ±		SIZE		CAGE CODE DRAWING NO	
3 PLC ±		108-1163		-	
4 PLC ±		114-2048		RESTRICTED TO	
ANGLES ±		WEIGHT		SCALE	
SEE P/N TABLE		3.49 grams		8:1	
FINISH		CUSTOMER DRAWING		SHEET 1 OF 1	
SEE P/N TABLE		A1		REV B	